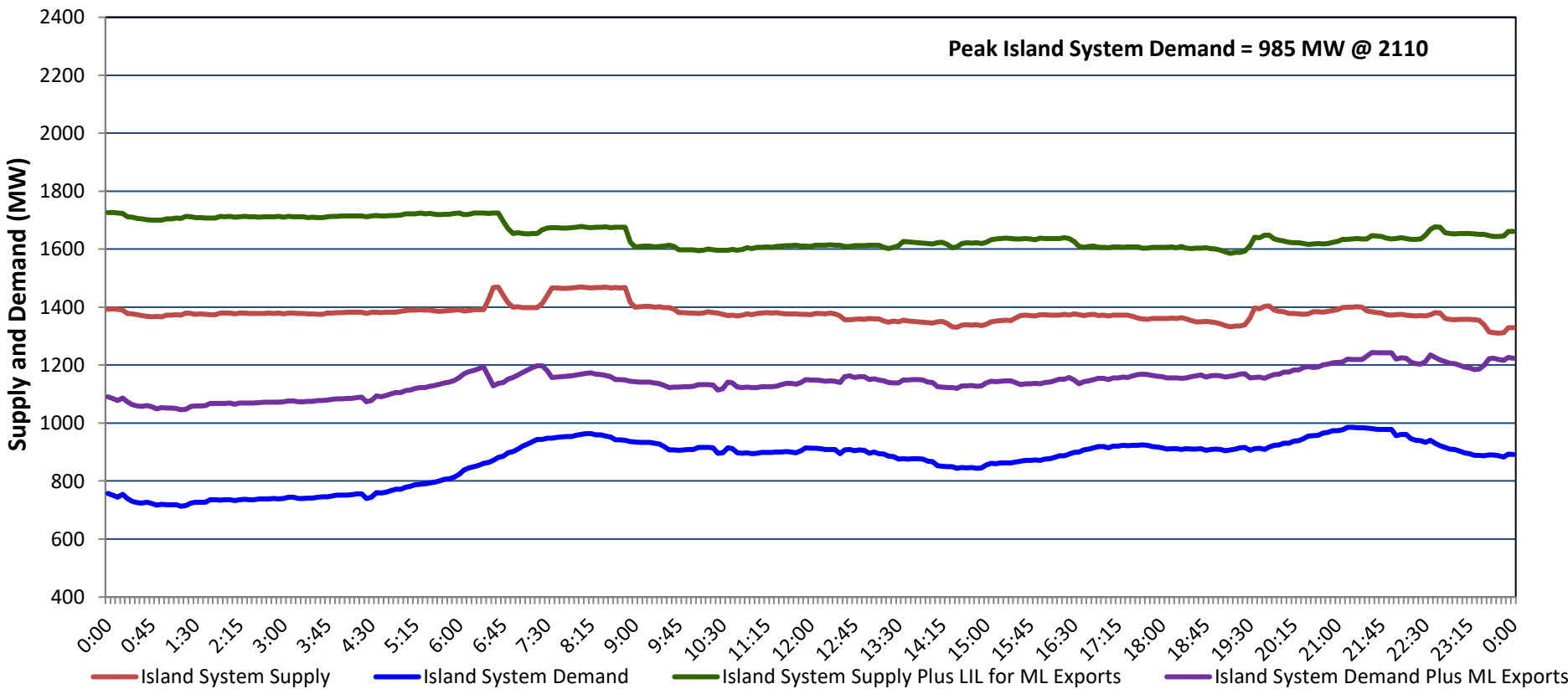


Newfoundland Labrador Hydro (NLH)  
Supply and Demand Status Report Filed Tuesday, May 06, 2025

Section 1  
Island Interconnected System - Supply, Demand & Exports  
Actual 24 Hour System Performance For Monday, May 05, 2025



Island Supply Notes For May 05, 2025

- A As of 0816 hours, March 26, 2025, St. Anthony Diesel Plant available at 8.85 MW due to forced derating (9.7 MW).
- B As of 0800 hours, March 30, 2025, Holyrood Unit 3 unavailable due to planned outage 130 MW (150 MW).
- C As of 0823 hours, March 31, 2025, Bay d'Espoir Unit 1 unavailable due to planned outage (76.5 MW).
- D As of 0823 hours, March 31, 2025, Bay d'Espoir Unit 2 unavailable due to planned outage (76.5 MW).
- E As of 1543 hours, May 03, 2025, Holyrood Unit 2 available but not operating 115 MW (170 MW).
- F As of 0800 hours, May 04, 2025, Holyrood Unit 1 unavailable due to planned outage (170 MW).
- G At 0851 hours, May 05, 2025, Hardwoods Gas Turbine unavailable due to planned outage (50 MW).
- H At 1955 hours, May 05, 2025, Paradise River Unit unavailable due to forced outage (8 MW).

Section 2  
Island Interconnected System - Supply, Demand & Outlook

Tue, May 06, 2025	Island System Outlook <sup>2</sup>	Seven-Day Forecast	Island System Daily Peak Demand (MW)	
			Forecast <sup>8</sup>	Adjusted <sup>6</sup>
Island System Supply: <sup>4</sup> NLH Island Generation: <sup>3,7</sup> NLH Island Power Purchases: <sup>5</sup> NP and CBPP Owned Generation: LIL/ML Net Imports to Island: <sup>9</sup>	1,508 MW 990 MW 115 MW 205 MW 198 MW	Tuesday, May 6, 2025	1,130	1,080
		Wednesday, May 7, 2025	1,035	985
		Thursday, May 8, 2025	885	835
		Friday, May 9, 2025	950	900
		Saturday, May 10, 2025	985	935
		Sunday, May 11, 2025	955	905
		Monday, May 12, 2025	995	945
7-Day Island Peak Demand Forecast:	1,130 MW			

Island Supply Notes For May 06, 2025

- Notes:
1. Generation outages for running and corrective maintenance are included. These are not unusual for power system operations. They generally do not impact customer supply. Hydro schedules outages to system equipment whenever possible to coincide with periods when customer demands are low and sufficient supply reserves are available. However, from time to time equipment outages are necessary and reserves may be impacted.
  2. As of 0800 Hours.
  3. Gross continuous unit output.
  4. Gross output from all Island sources (including Note 3).
  5. NLH Island Power Purchases include: ML Imports, Exploits Generation, Rattle Brook, Star Lake, Wind Generation and capacity assistance (when applicable).
  6. Adjusted for interruptible load and the impact of voltage reduction when applicable.
  7. Due to limitations inherent in the design of combustion turbines, the output of combustion turbines may be reduced in the event that ambient temperatures exceed the threshold required for full rated output. This threshold is dependent on the design of each turbine.
  8. Does not include ML Exports.
  9. LIL Import sunk in the Island System. Actual LIL flows will be restricted by various system conditions including, but not limited to, Island Load, ML Exports and Avalon Unit status.

Section 3  
Island Peak Demand and Exports Information  
Previous Day Actual Peak and Current Day Forecast Peak

Mon, May 05, 2025	Island Peak Demand <sup>10</sup>	21:10	985 MW
	Exports at Peak		235 MW
	LIL Net Imports to Island		1,141 MWh
Tue, May 06, 2025	Forecast Island Peak Demand		1,130 MW

- Notes:
10. Island Demand is supplied by NLH generation and purchases, LIL Imports plus generation owned and operated by Newfoundland Power and Corner Brook Pulp & Paper (Deer Lake Power, DLP).